

Sea Ice Advisory to 33rd Indian Scientific Expedition to Antarctica

Feb 20, 2014

Highlights

1. Sea Ice thickness based on SARAL AltiKa data analysis near Bharati are presented in three categories Thin, Medium Thick and Thick Sea Ice.
2. Entry points through sea ice for ship route to reach Bharati Island are suggested.

Oceanic Science Division (OSD),

Atmospheric & Oceanic Sciences Group (AOSG), EPSA,

Space Applications Centre (SAC), ISRO,

Ahmedabad - 380015, India.

Sea Ice Thickness Estimated using SARAL Altika Data

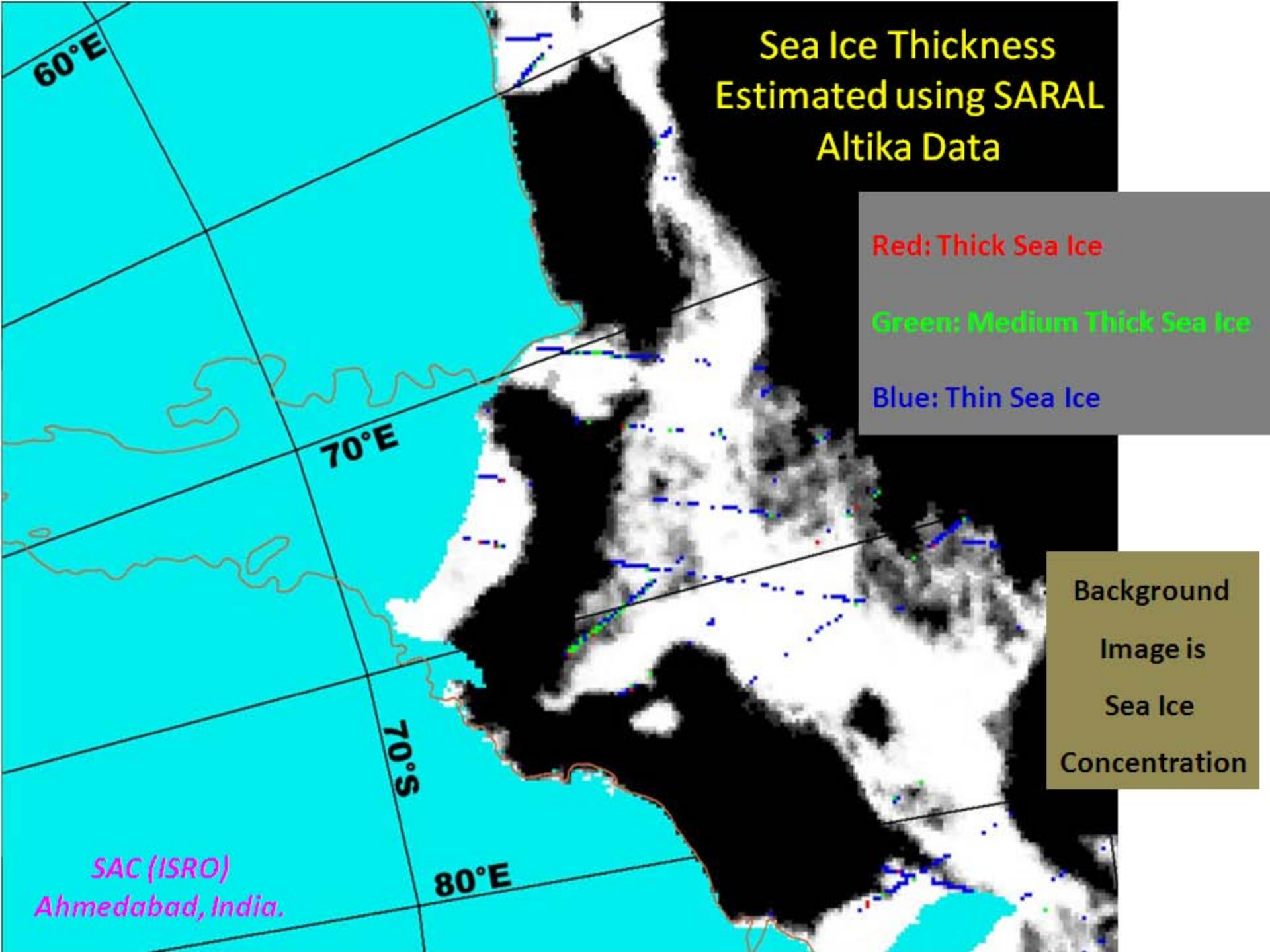
Red: Thick Sea Ice

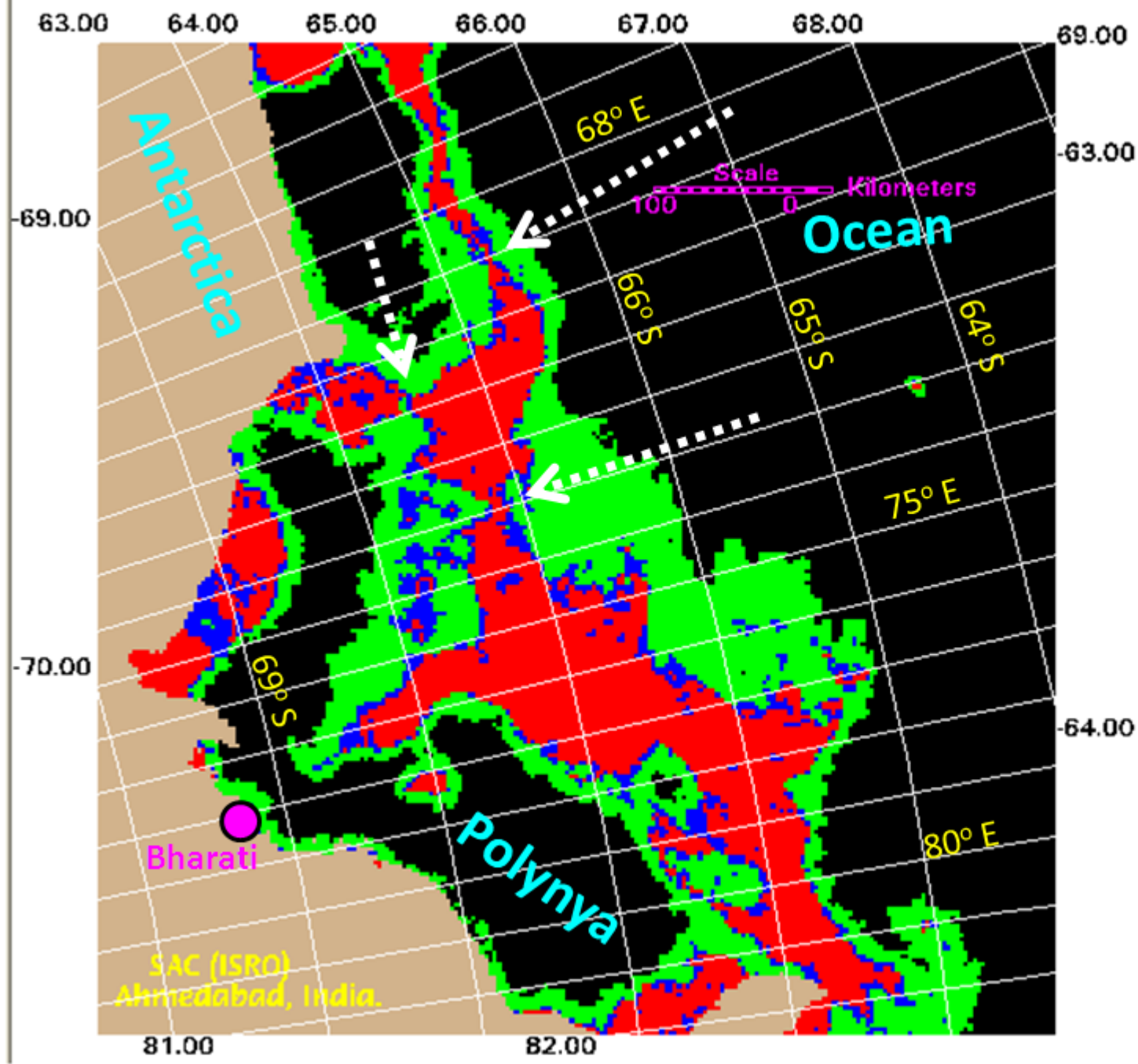
Green: Medium Thick Sea Ice

Blue: Thin Sea Ice

Background
Image is
Sea Ice
Concentration

SAC (ISRO)
Ahmedabad, India.





Based on Sea Ice
Concentration (SIC)
Dt. 19 Feb 2014

- SIC: > 99%
- SIC: 90-99%
- SIC: < 90%

White Arrow Heads
Show the locations
Where ship may get
Lesser resistance.