

Sea Ice Advisory to 33rd Indian Scientific Expedition to Antarctica

Highlights

Feb 26, 2014

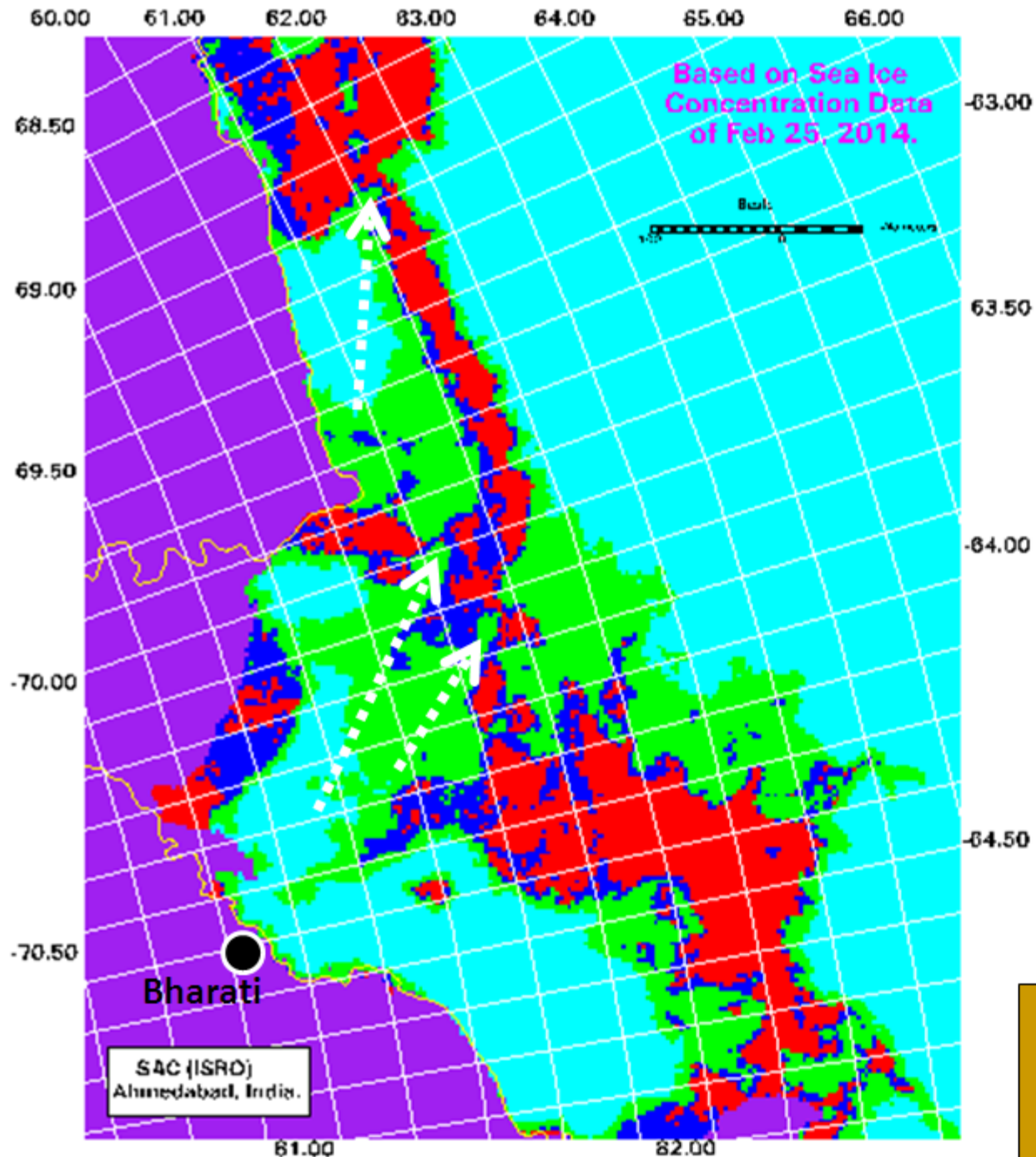
1. Sea ice concentration analysis and deformation in India Bay are presented.
2. Sea Ice thickness based on SARAL AltiKa data analysis near Bharati are presented in three categories Thin, Medium and Thick Sea Ice.
3. Exit points through sea ice for ship route from Bharati Island are suggested.

Oceanic Science Division (OSD),

Atmospheric & Oceanic Sciences Group (AOSG), EPSA,

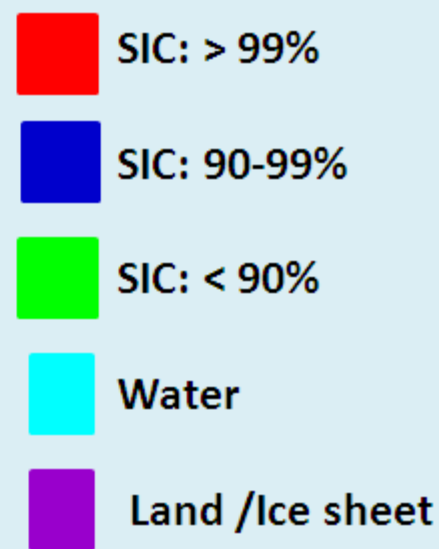
Space Applications Centre (SAC), ISRO,

Ahmedabad - 380015, India.



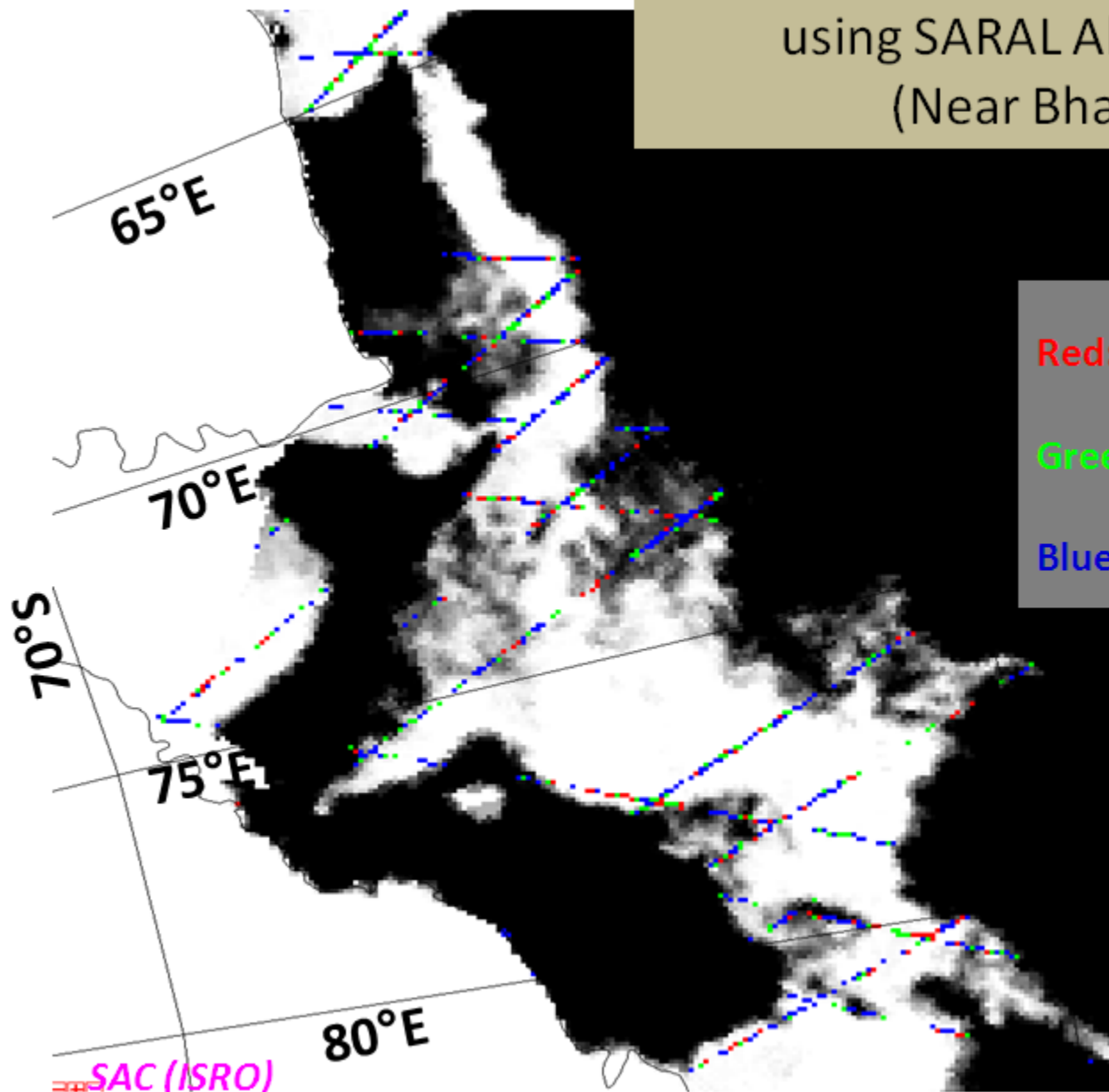
Sea Ice Status Near Bharati

Based on Sea Ice Concentration (SIC)
Dt. 25 Feb 2014



White arrow heads show Locations of relatively less Sea ice concentration.

Sea Ice Thickness Estimated
using SARAL Altika Data
(Near Bharati)



Red: Thick Sea Ice

Green: Medium Thick Sea Ice

Blue: Thin Sea Ice

Background

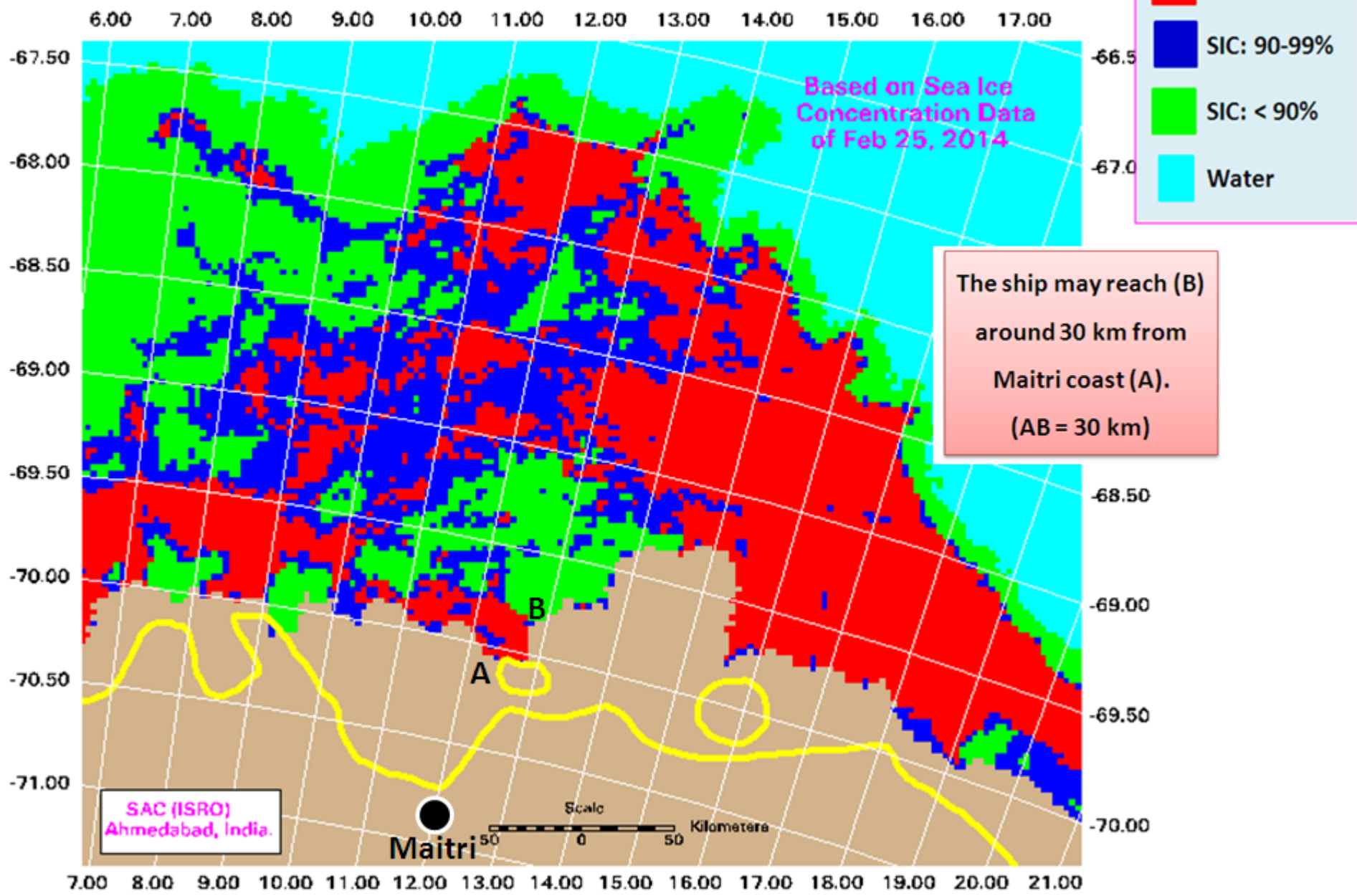
Image is

Sea Ice

Concentration

SAC (ISRO)
Ahmedabad, India.

Current Status of Sea Ice Near India Bay



Broken Sea Ice Floe as seen from MODIS 250m data of Feb 23, 2014. (India Bay)

