

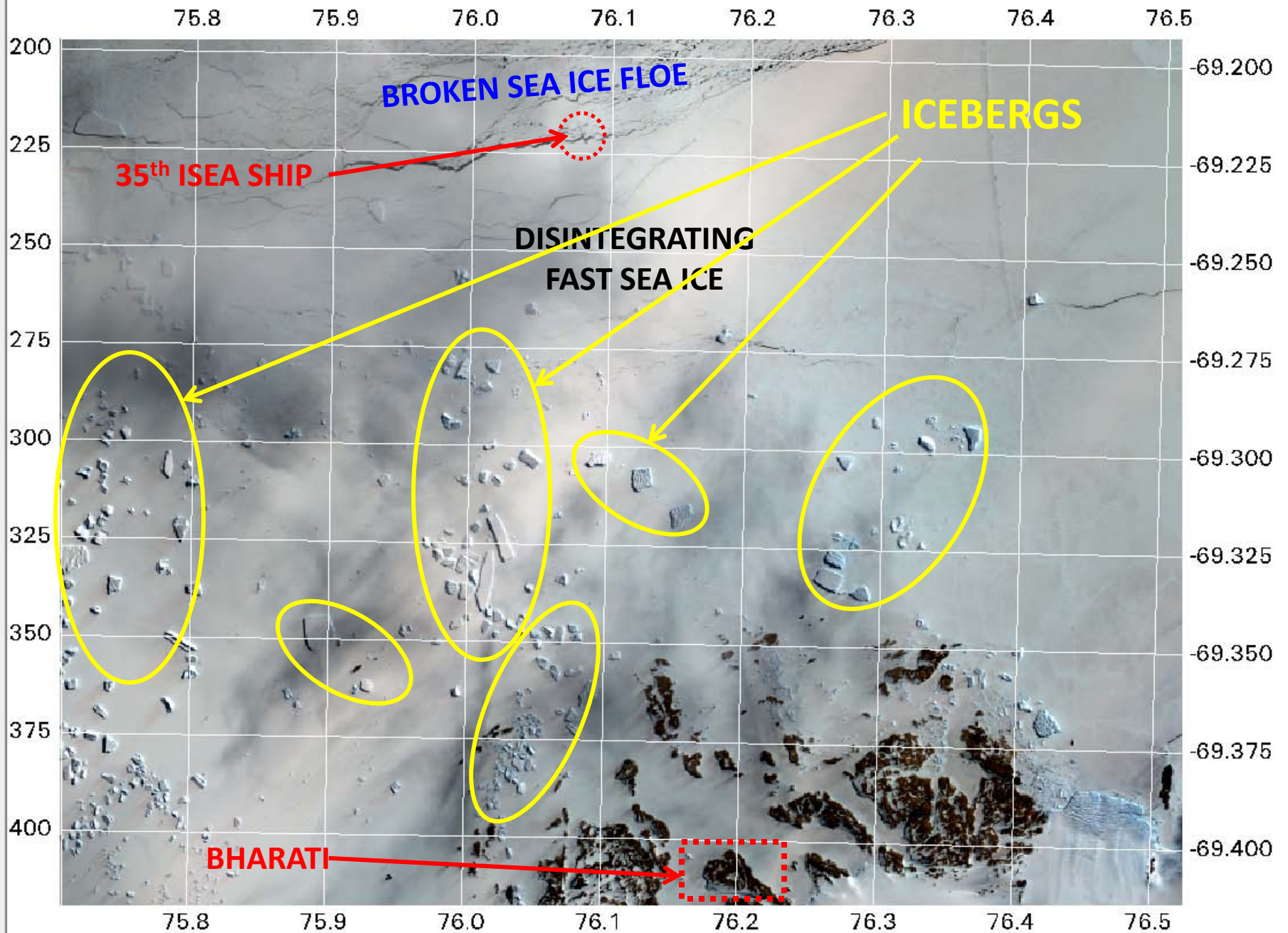
# Sea Ice Advisory to 35<sup>th</sup> Antarctic Expedition

Dt. Jan 6, 2016

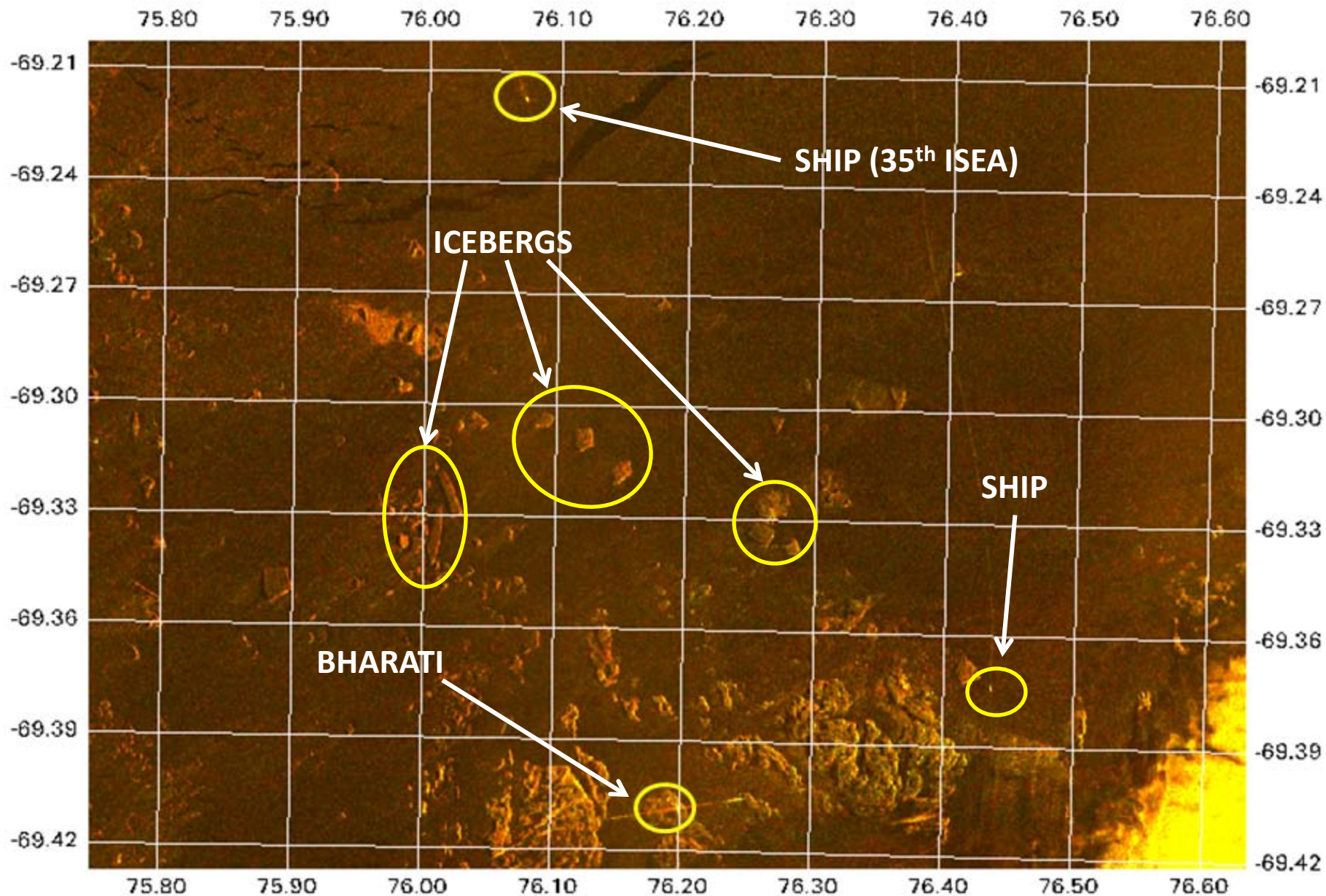
## Highlights

- Based on the satellite data analysis, it is clear that the sea ice is deforming fast and new leads are forming. The ship may sail towards Bharati taking advantage of the visible leads.
- A ship route has been suggested (RED LINE) along the visible leads on Jan 5, 2016 satellite image. The location of 35<sup>th</sup> ISEA ship, Bharati station, another ship, a number of icebergs are shown in the images.
- Enlarged sections of images showing suggested route are also provided.
- It is suggested that a helicopter survey may be carried out to verify the suggested routes, leads, and the current situation of the sea ice.

# RESOURCESAT-2 LISS-IV Data: Jan 5, 2016 over the Antarctic Coast Near Bharati

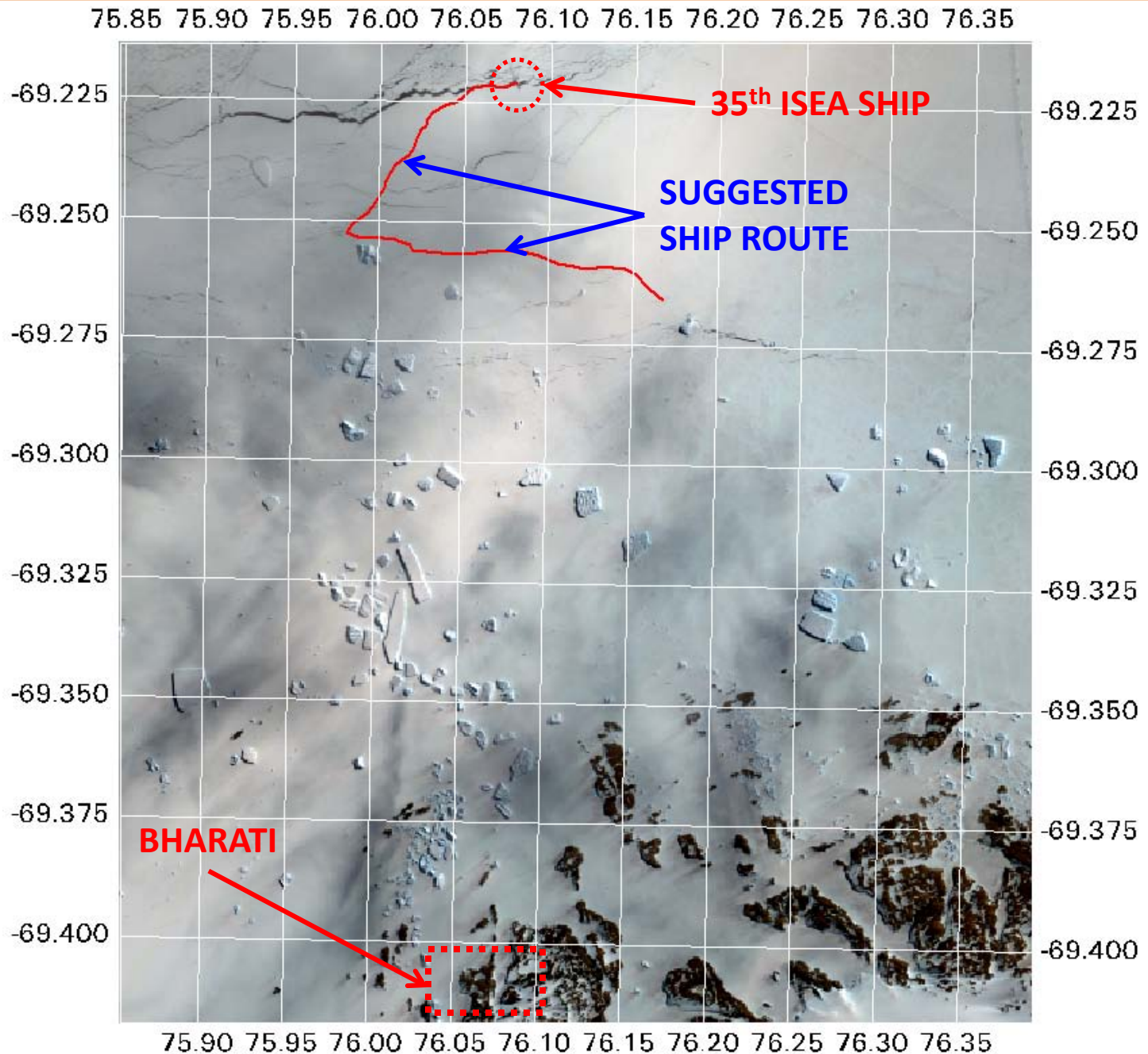


# RISAT-1 SAR MRS Data: Jan 5, 2016 over the Antarctic Coast Near Bharati



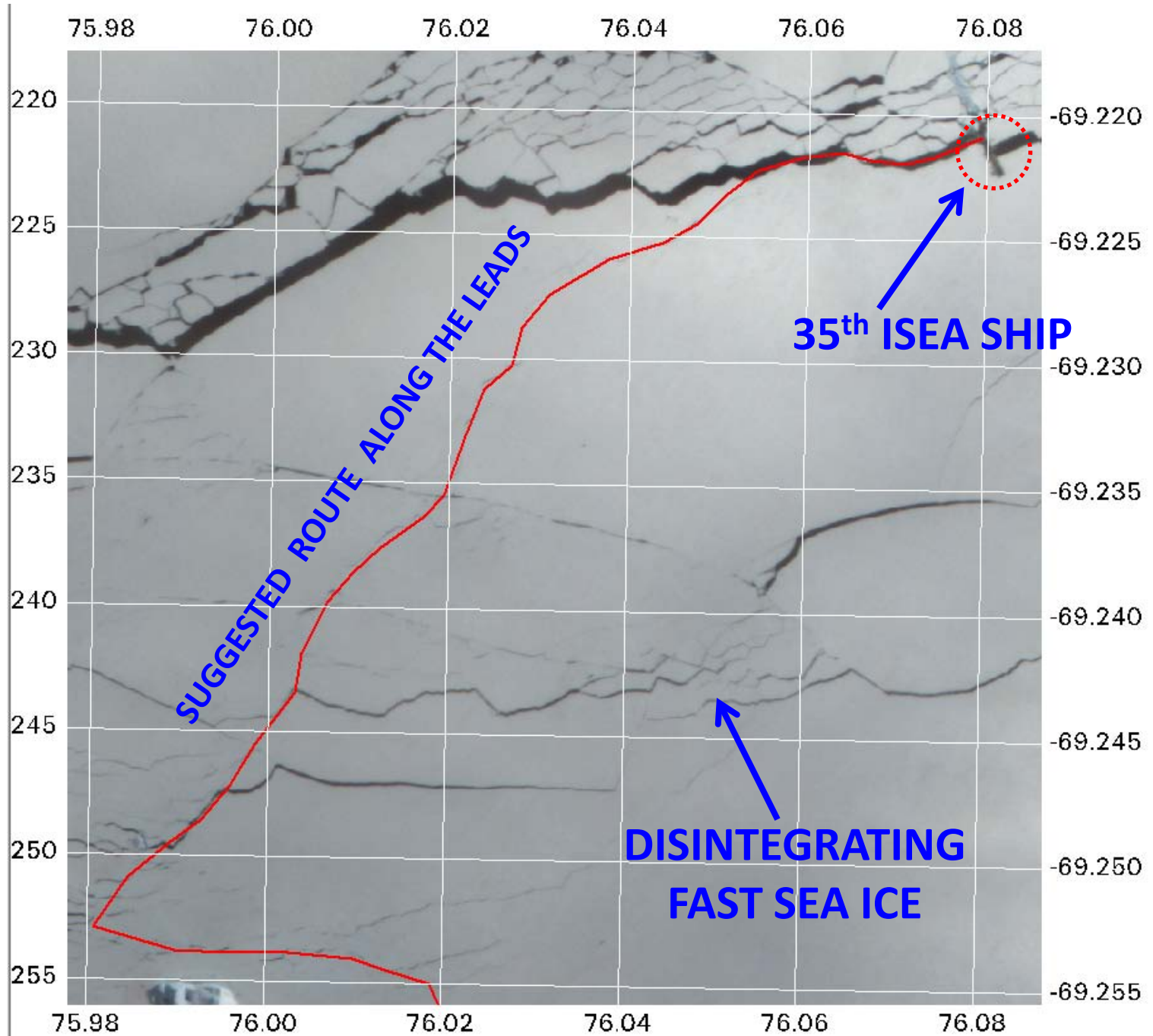
# RESOURCESAT-2 LISS-IV Data: Jan 5, 2016 over the Antarctic Coast Near Bharati

A ship route is suggested (RED line) based on the leads seen on the satellite image. A helicopter survey may be carried out before sailing the ship to ensure that the conditions have not changed since Jan 5, 2016.



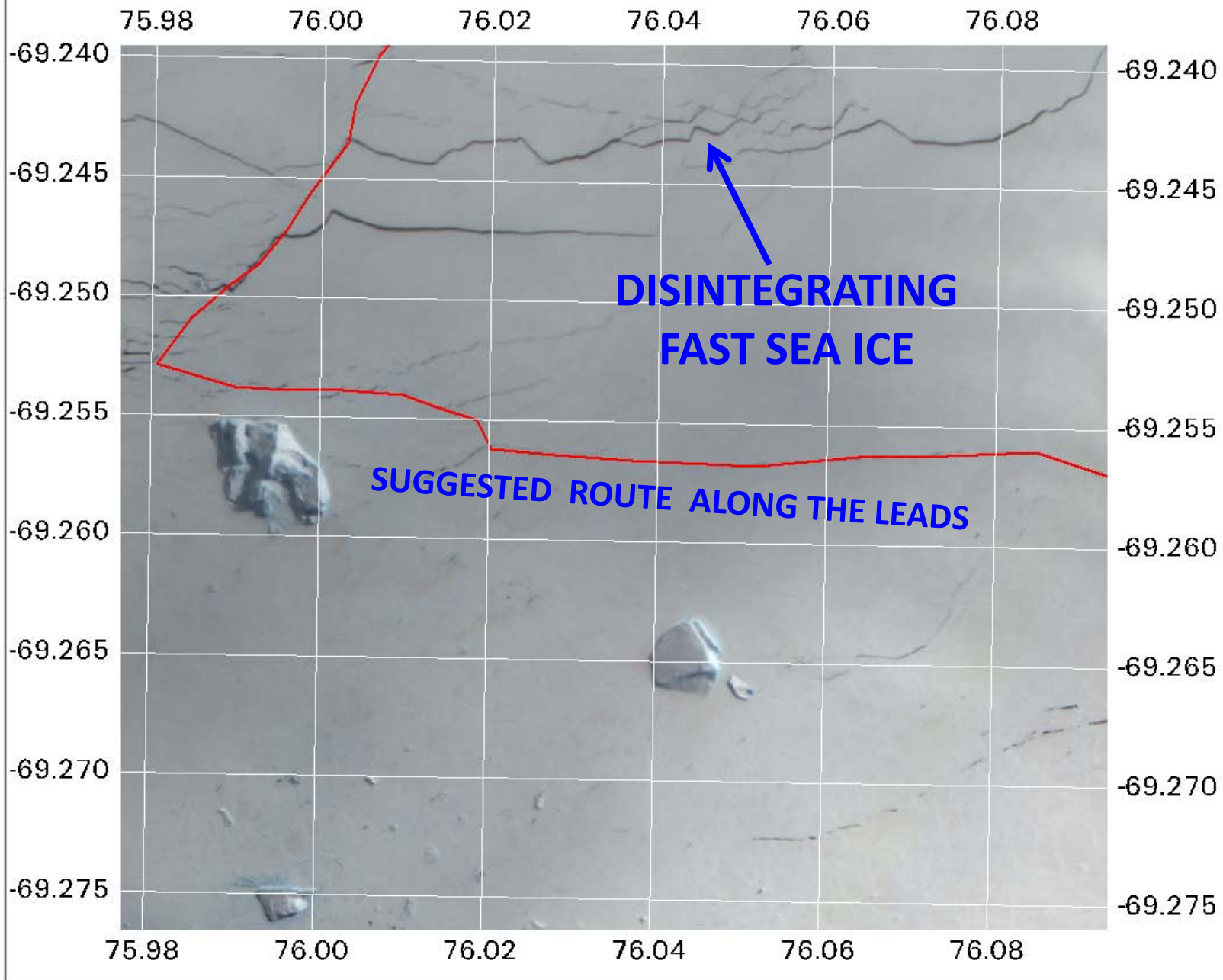
**An  
enlarged  
Section1**

Suggested  
Ship  
Route is  
based on  
Jan 5,  
2016  
image  
(RS2  
LISS-IV)



# An enlarged Section 2

Suggested Ship Route is based on Jan 5, 2016 image (RS2 LISS-IV)



**An  
enlarged  
Section3**

Suggested  
Ship Route  
is based  
on Jan 5,  
2016  
image  
(RS2  
LISS-IV)

